

PLYWOOD | NAILED WOOD | PLASTIC
HYBRID | WOOD/METAL | HARDBOARD | STAMPED METAL



Vermont
Connecticut
California
Indiana
North Carolina
Virginia
Texas
Mexico
Canada

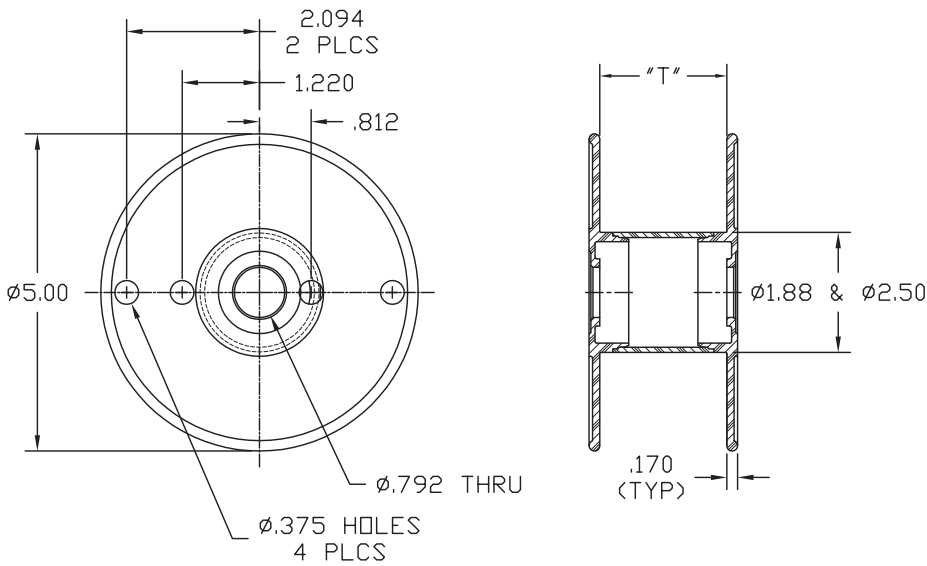
Rutland, VT
Enfield, CT
Madera, CA
New Carlisle, IN
Statesville, NC
Fincastle, VA
McKinney, TX
Bonham, TX
Monterrey, MEX
St. Jerome, QC
Bowmanville, ON

WWW.CARRIS.COM

(802)-773-9111 Tel
(860)-749-8308 Tel
(559)-674-0804 Tel
(574)-654-8596 Tel
(704)-872-0981 Tel
(540)-473-2210 Tel
(972)-542-3221 Tel
(903)-640-1503 Tel
+52(818)-316-7393 Tel
(450)-431-3221 Tel
(905)-623-4455 Tel

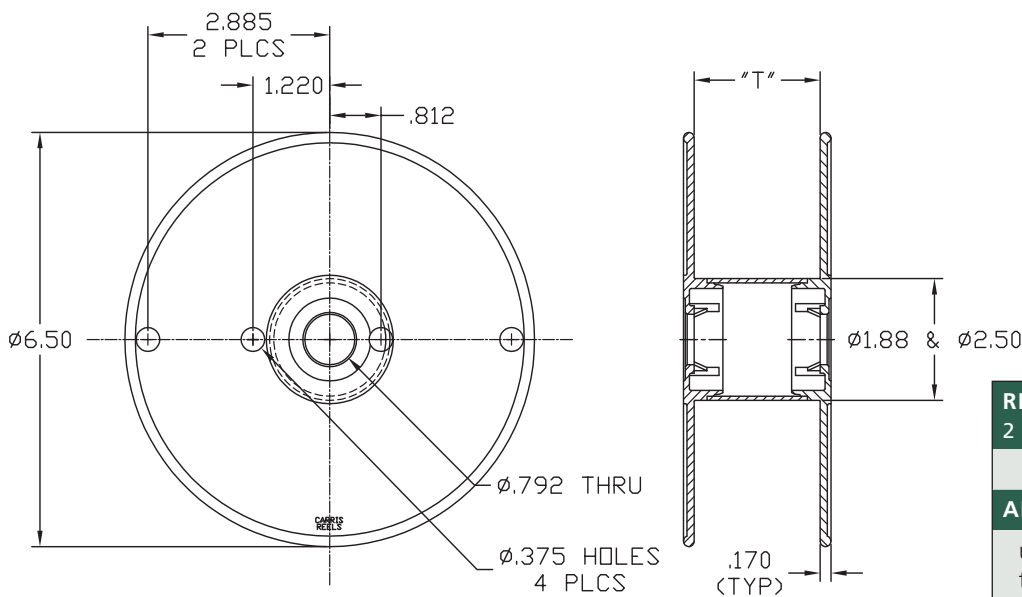
(802)-770-3551 Fax
(860)-749-8558 Fax
(559)-674-0804 Fax
(574)-654-3149 Fax
(704)-873-0654 Fax
(540)-473-2878 Fax
(972)-548-7335 Fax
(903)-640-1509 Fax
+52(818)-316-7395 Fax
(450)-431-2433 Fax
(905)-623-9795 Fax

STANDARD 5" UTILITY



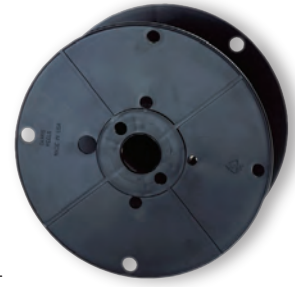
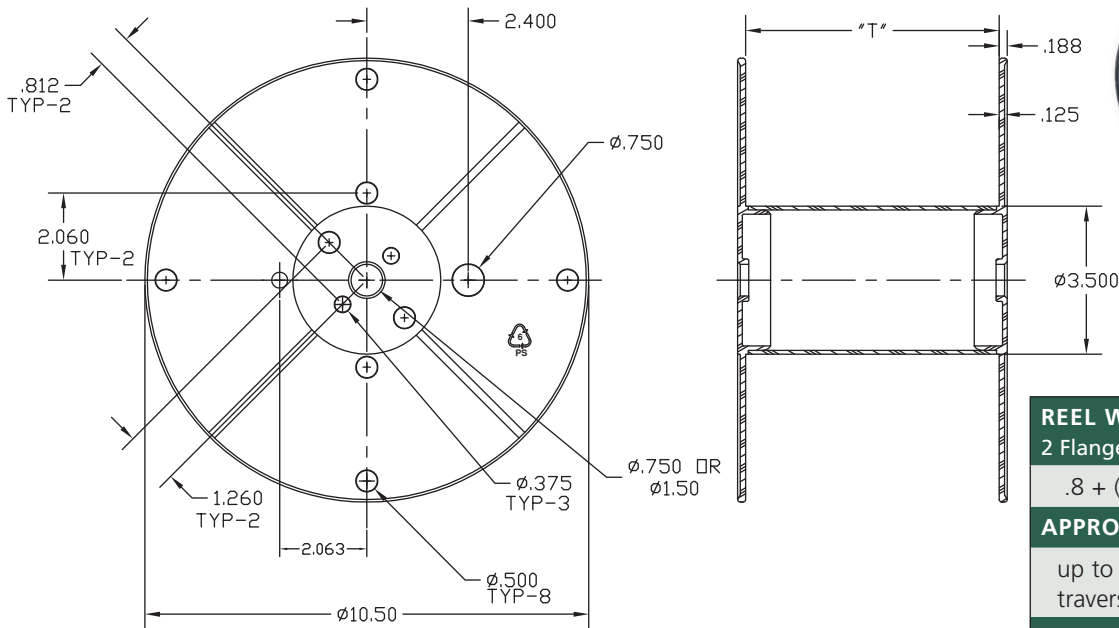
REEL WEIGHT (LBS.)
2 Flanges + (Weight of Barrel x Traverse)
$.2 + (.015 \times T)$
APPROX. CAPACITY (LBS.)
up to 10 lbs. depending on traverse length
PER PALLET/BOX/GAYLORD
varies according to traverse length

STANDARD 6½" UTILITY



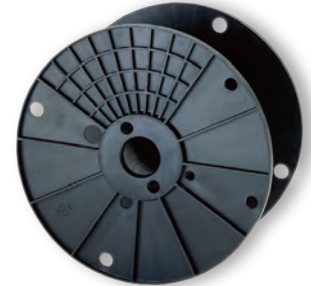
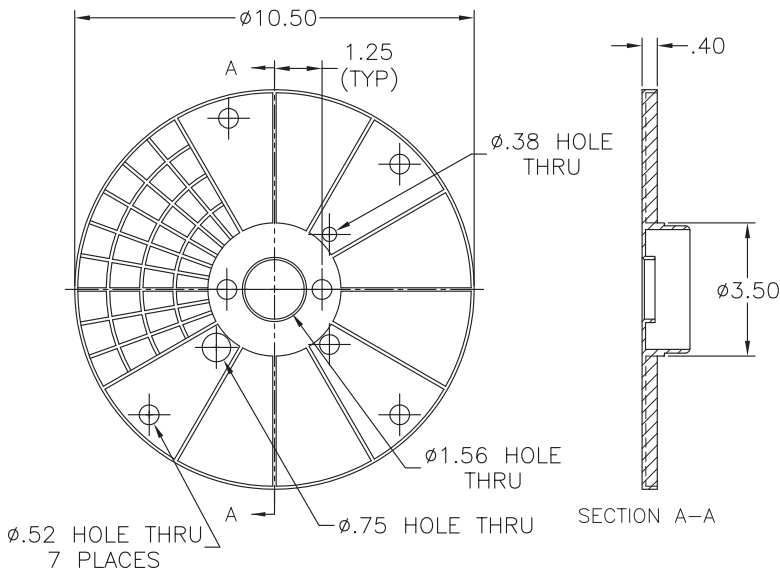
REEL WEIGHT (LBS.)
2 Flanges + (Weight of Barrel x Traverse)
$.36 + (.015 \times T)$
APPROX. CAPACITY (LBS.)
up to 20 lbs. depending on traverse length
PER PALLET/BOX/GAYLORD
varies according to traverse length

STANDARD 10½" UTILITY



REEL WEIGHT (LBS.)
2 Flanges + (Weight of Barrel x Traverse)
.8 + (.030 x T)
APPROX. CAPACITY (LBS.)
up to 30 lbs. depending on traverse length
PER PALLET/BOX/GAYLORD
varies according to traverse length

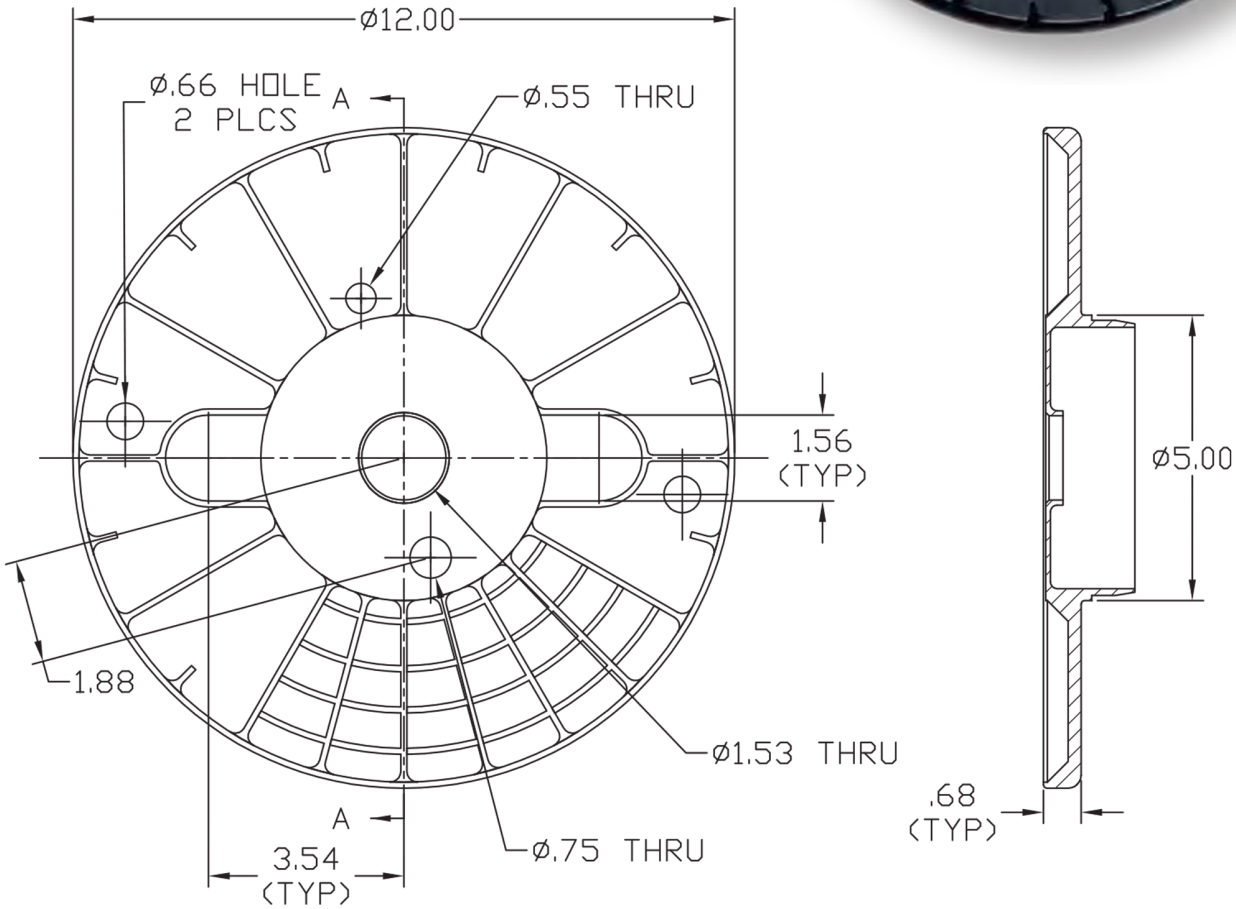
STANDARD 10½" RIBBED UTILITY



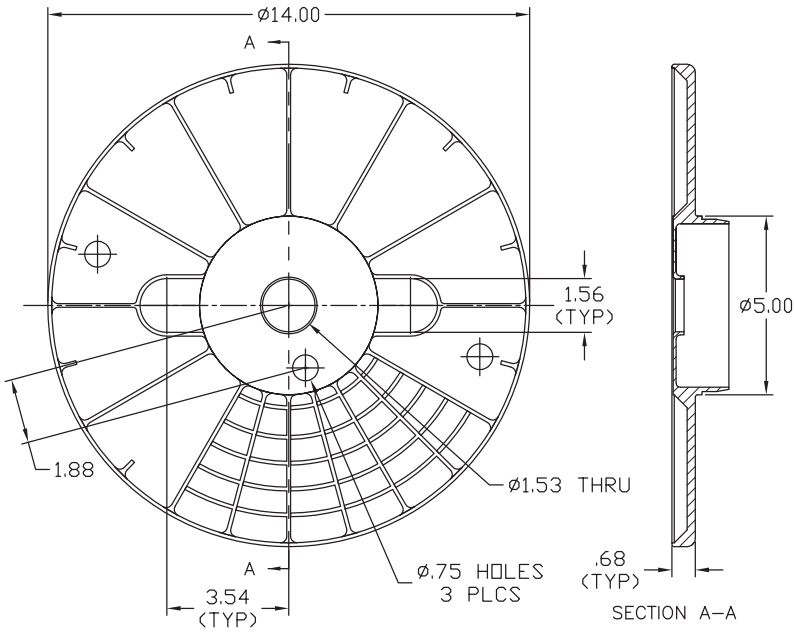
REEL WEIGHT (LBS.)
2 Flanges + (Weight of Barrel x Traverse)
.85 + (.030 x T)
APPROX. CAPACITY (LBS.)
up to 40 lbs. depending on traverse length
PER PALLET/BOX/GAYLORD
varies according to traverse length

STANDARD 12" UTILITY

REEL WEIGHT (LBS.) 2 Flanges + (Weight of Barrel x Traverse)
1.4 + (.050 x T)
APPROX. CAPACITY (LBS.)
up to 50 lbs. depending on traverse length
PER PALLET/BOX/GAYLORD
varies according to traverse length



STANDARD 14" UTILITY



REEL WEIGHT (LBS.)

2 Flanges + (Weight of Barrel x Traverse)

$$2 + (.050 \times T)$$

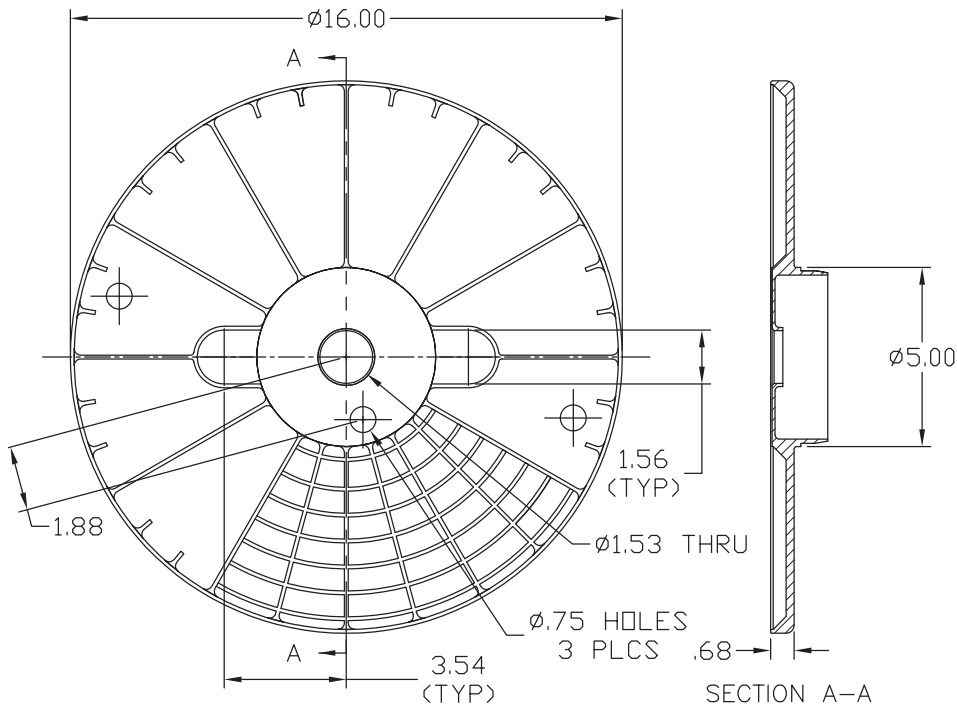
APPROX. CAPACITY (LBS.)

up to 60 lbs. depending on traverse length

PER PALLET/BOX/GAYLORD

varies according to traverse length

STANDARD 16" UTILITY



REEL WEIGHT (LBS.)

2 Flanges + (Weight of Barrel x Traverse)

$$2.5 + (.050 \times T)$$

APPROX. CAPACITY (LBS.)

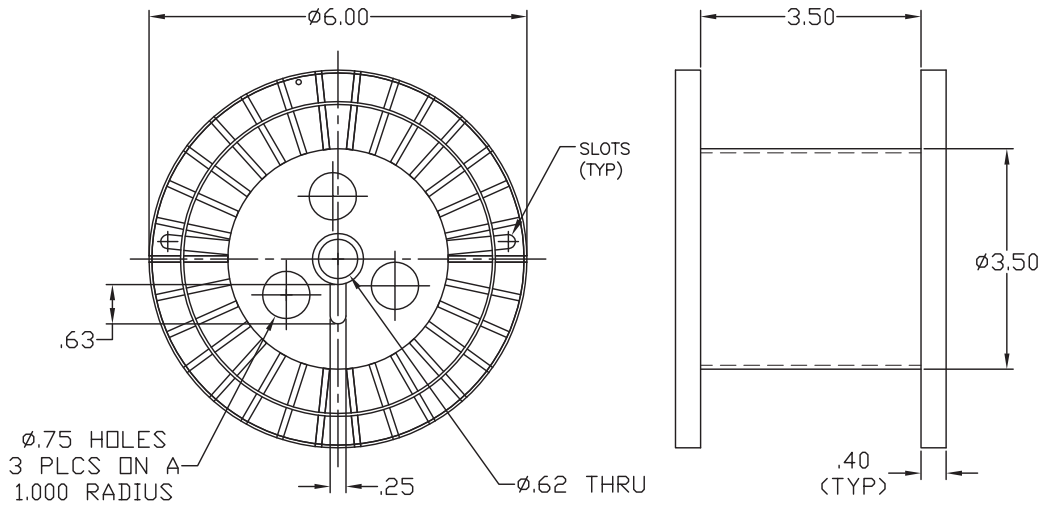
up to 70 lbs. depending on traverse length

PER PALLET/BOX/GAYLORD

varies according to traverse length

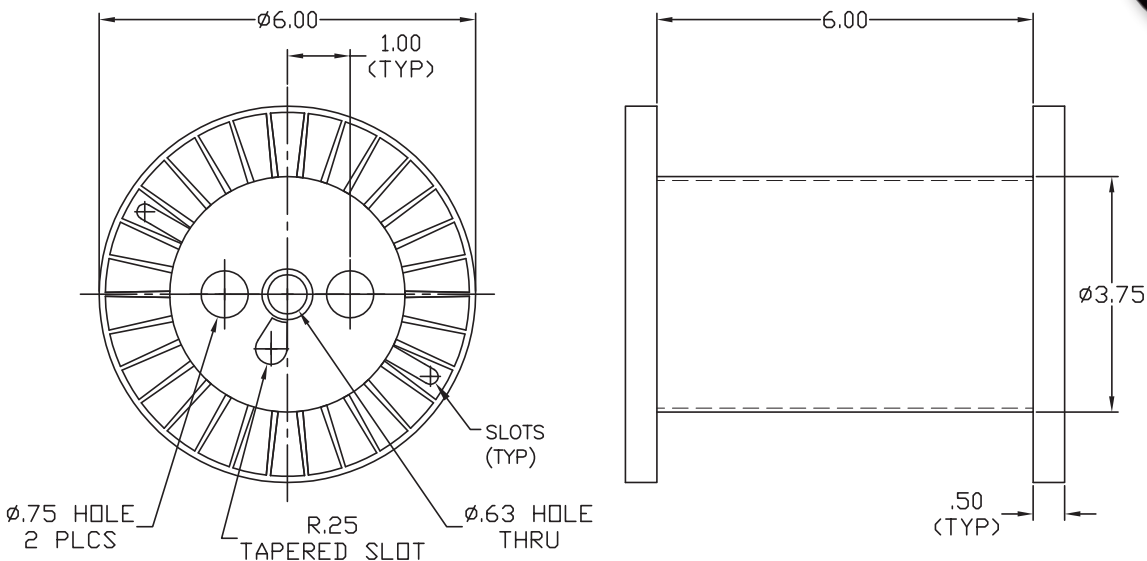
FINE WIRE 6 x 3½ x 3½

REEL WEIGHT (LBS.)	APPROX. CAPACITY (LBS.)	# PER PALLET/BOX
0.7	6	1,200/pallet; 100/box



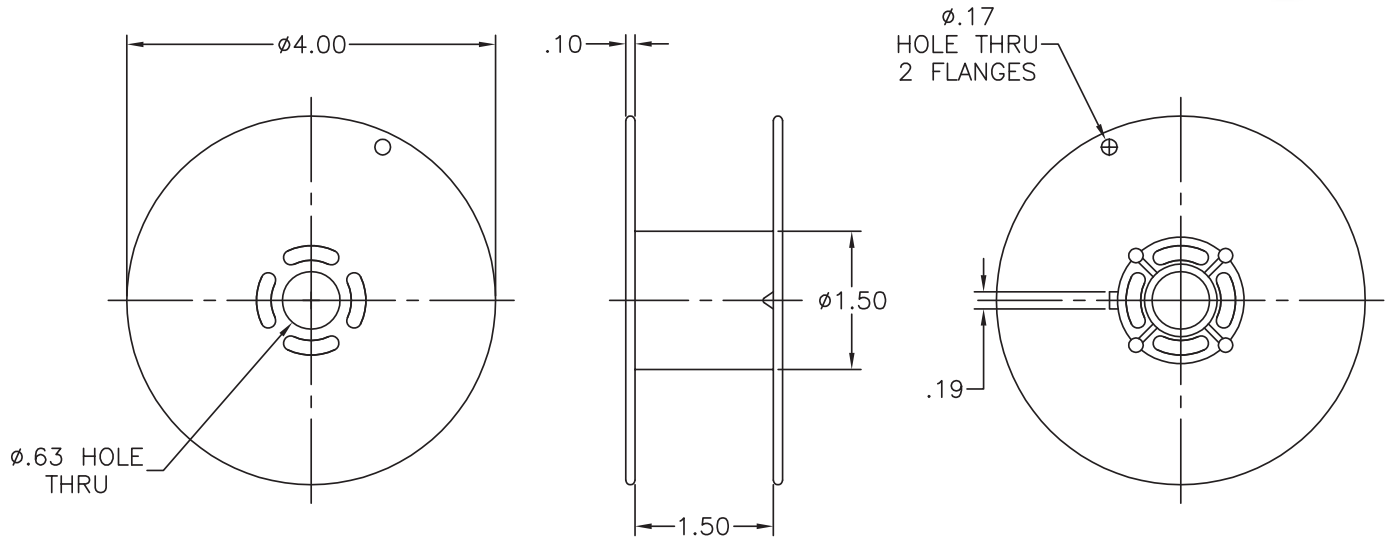
FINE WIRE 6 x 6 x 3¾

REEL WEIGHT (LBS.)	APPROX. CAPACITY (LBS.)	# PER PALLET/BOX
1.1	10	720/pallet; 60/box



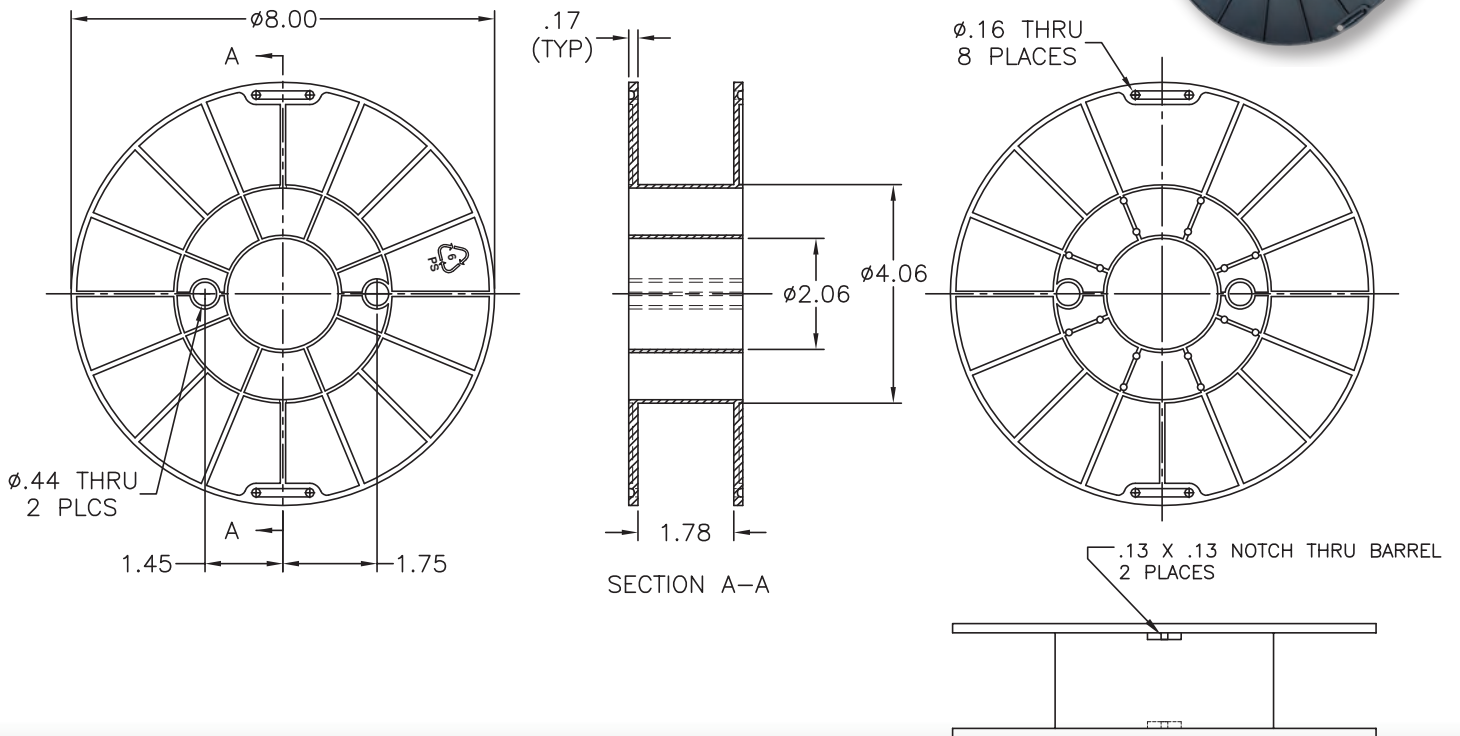
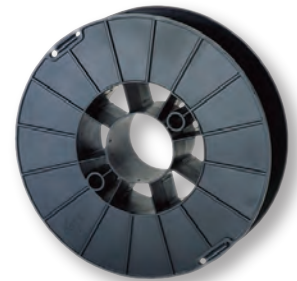
WELDING WIRE 4"

REEL WEIGHT (LBS.)	APPROX. CAPACITY (LBS.)	# PER PALLET
0.14	2	6,400/pallet



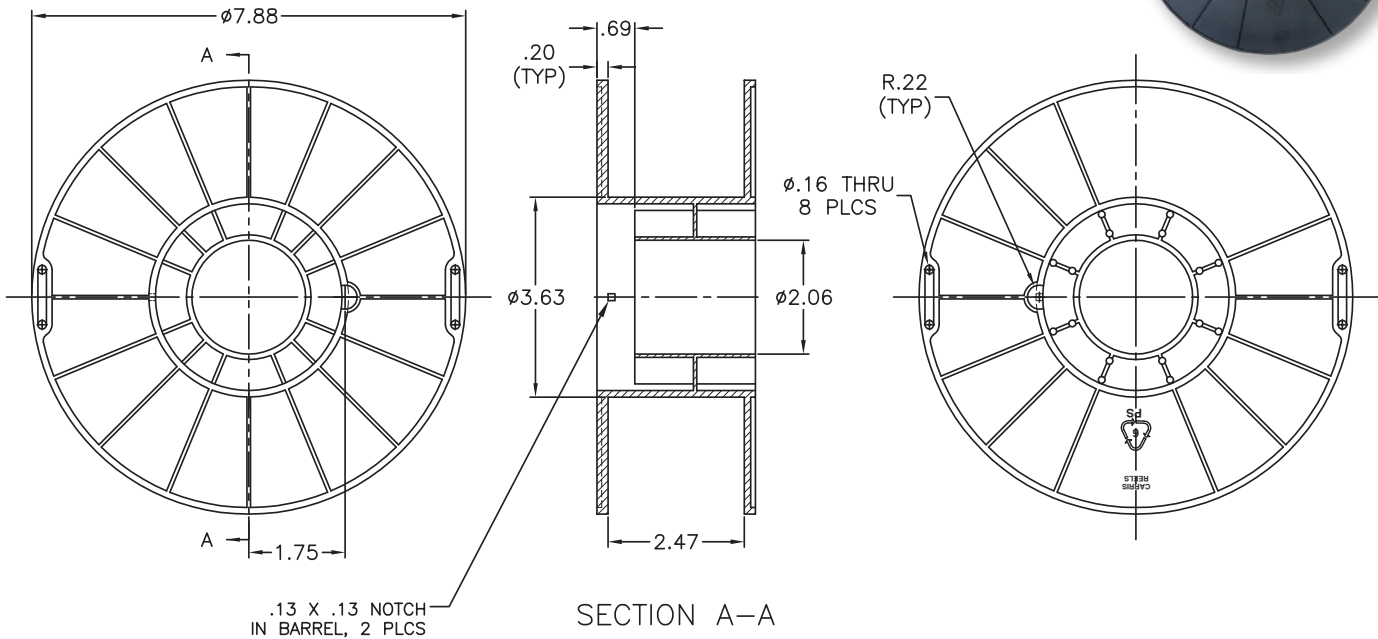
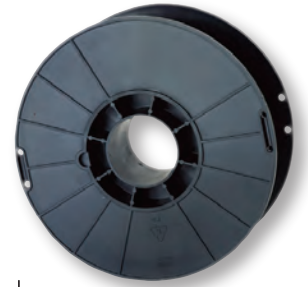
WELDING WIRE 8" (10 LB)

REEL WEIGHT (LBS.)	APPROX. CAPACITY (LBS.)	# PER PALLET
0.66	10	720/pallet



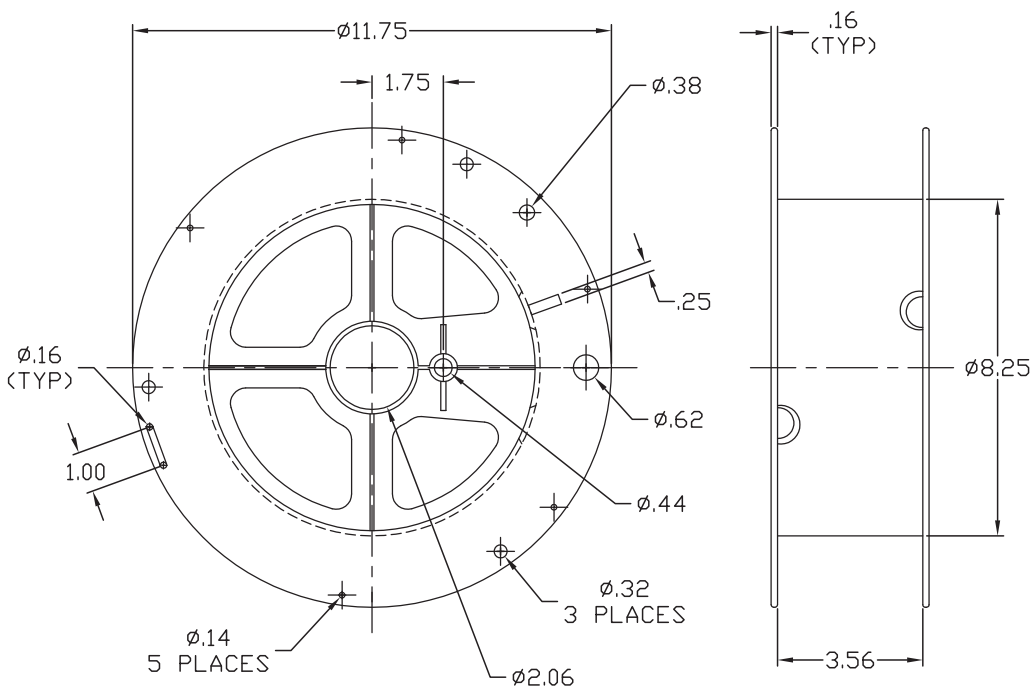
WELDING WIRE 8" WITH RECESSED HUB (15 LB)

REEL WEIGHT (LBS.)	APPROX. CAPACITY (LBS.)	# PER PALLET
0.68	15	1,008/pallet

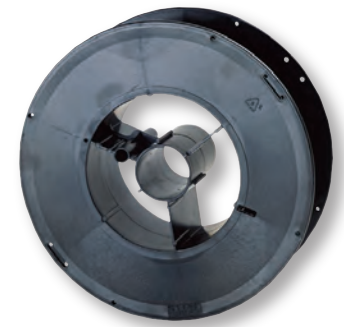
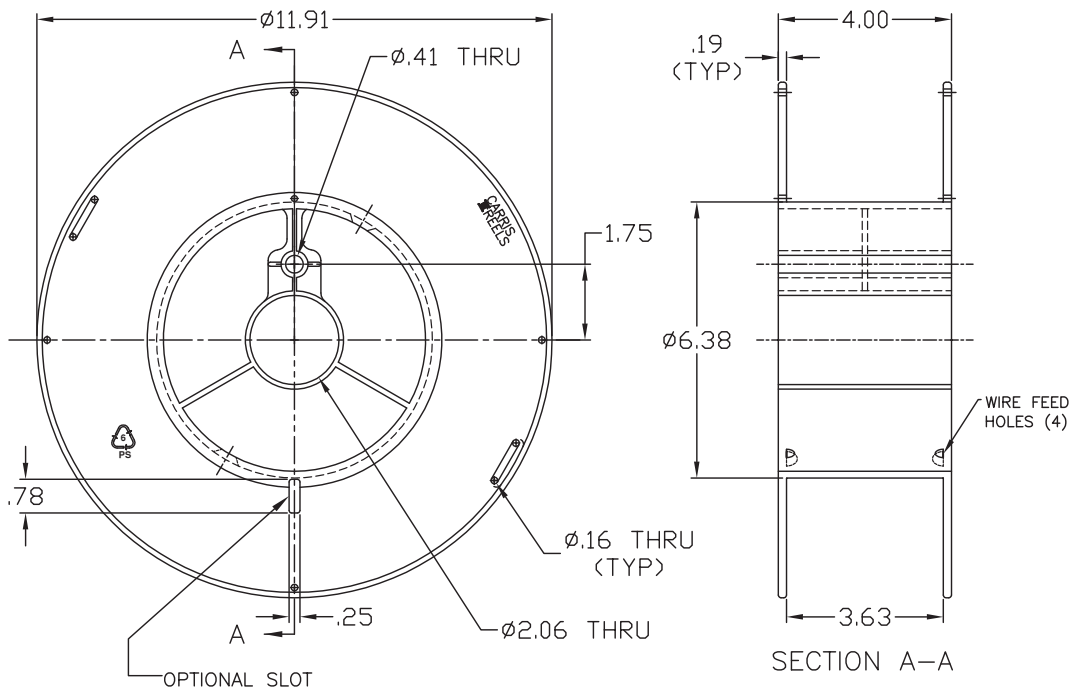


WELDING WIRE 11¾ x 3⅝ x 8¼

REEL WEIGHT (LBS.)	APPROX. CAPACITY (LBS.)	# PER PALLET
1.39	up to 30	176/pallet



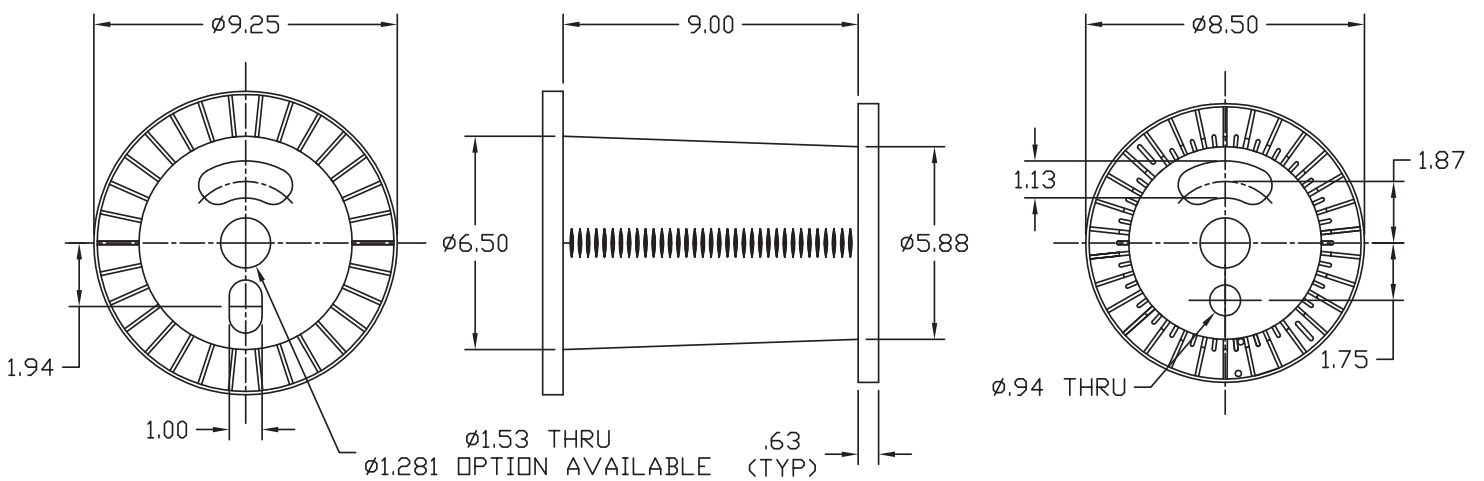
WELDING WIRE 11³/₄ x 3⁵/₈ x 6³/₈



REEL WEIGHT (LBS.)
1.73
APPROX. CAPACITY (LBS.)
up to 45
PER PALLET
220/pallet

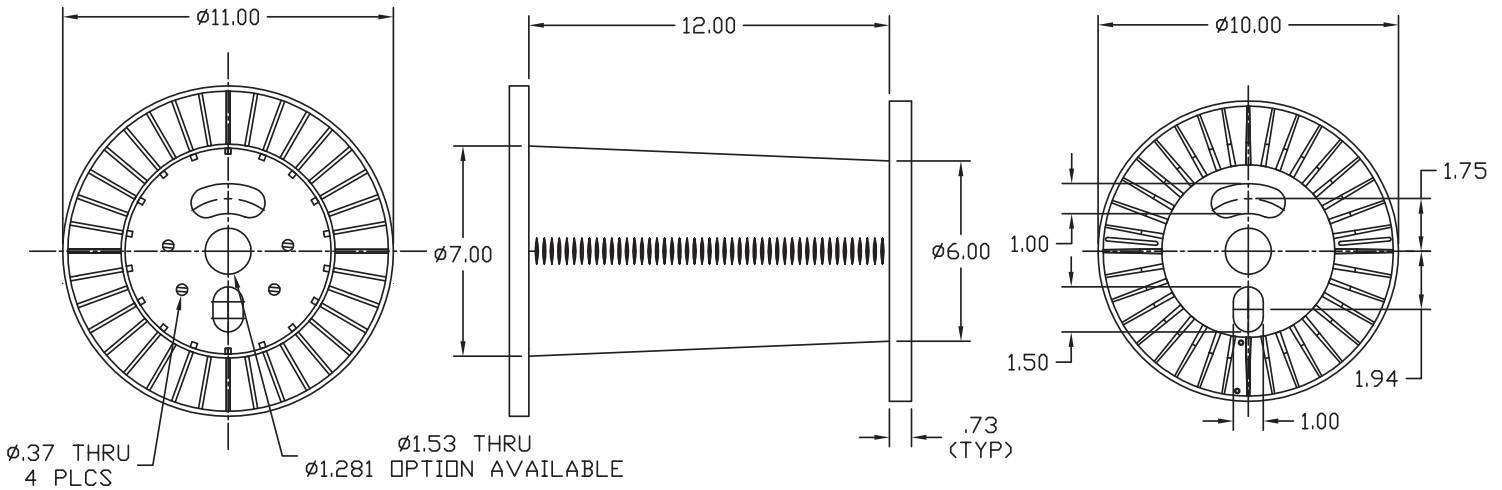
MAGNET WIRE 8¹/₂ x 9¹/₄ x 9

REEL WEIGHT (LBS.)	APPROX. CAPACITY (LBS.)	# PER PALLET
1.9	45	200/pallet



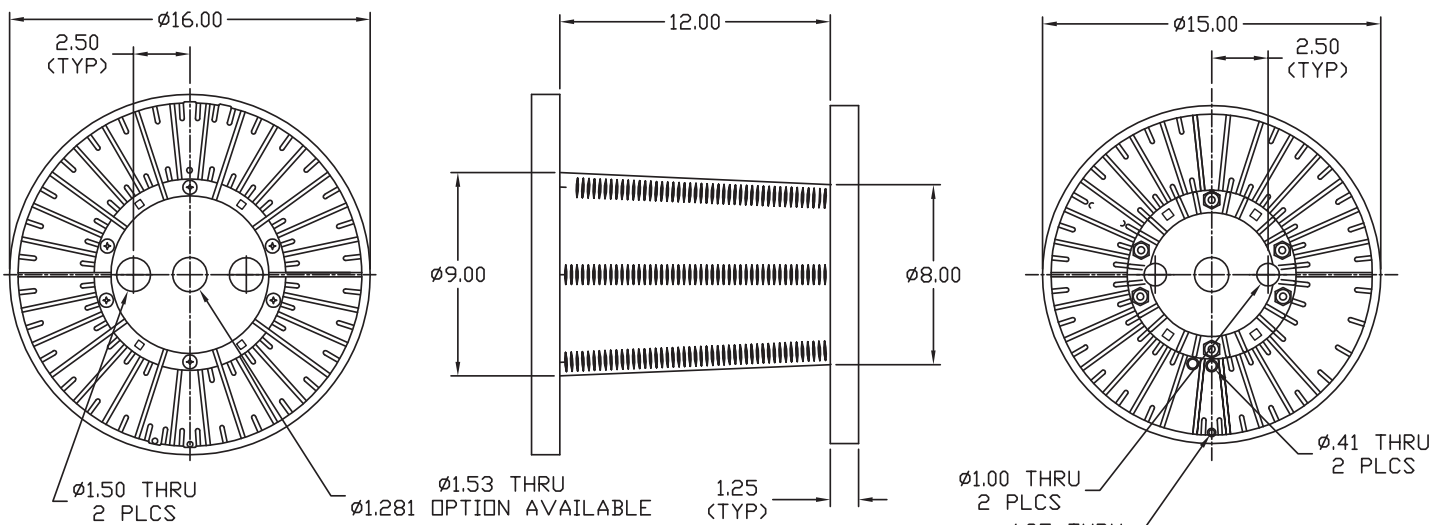
MAGNET WIRE 10 x 11 x 12

REEL WEIGHT (LBS.)	APPROX. CAPACITY (LBS.)	# PER PALLET
3	100	150/pallet



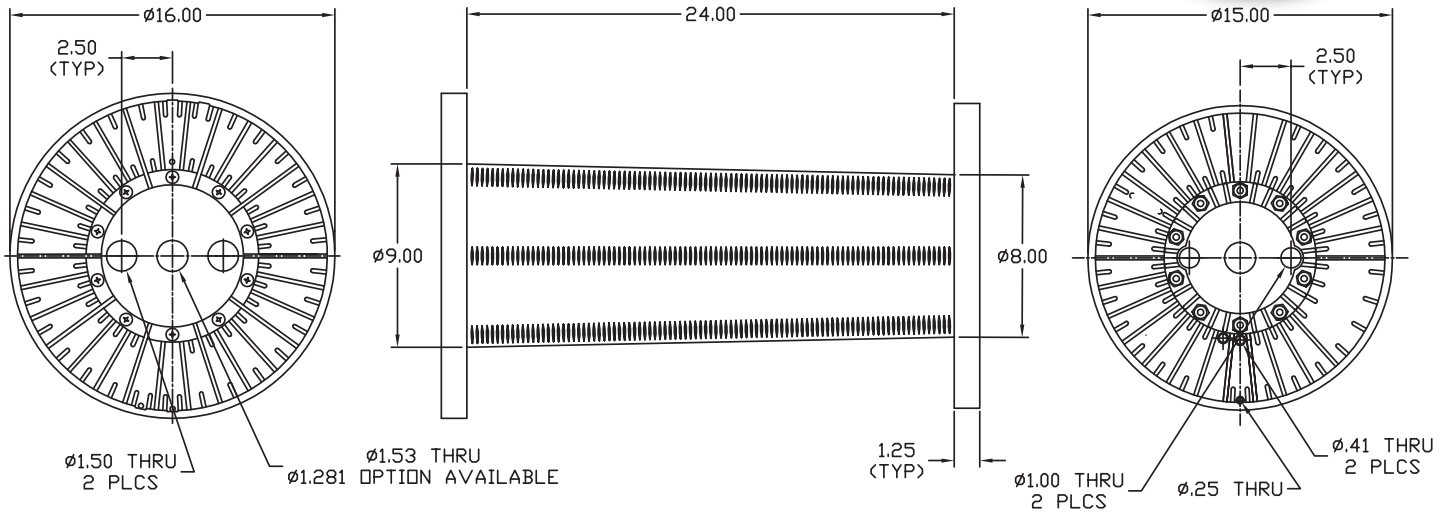
MAGNET WIRE 15 x 16 x 12

REEL WEIGHT (LBS.)	APPROX. CAPACITY (LBS.)	# PER PALLET
10	250	45/pallet



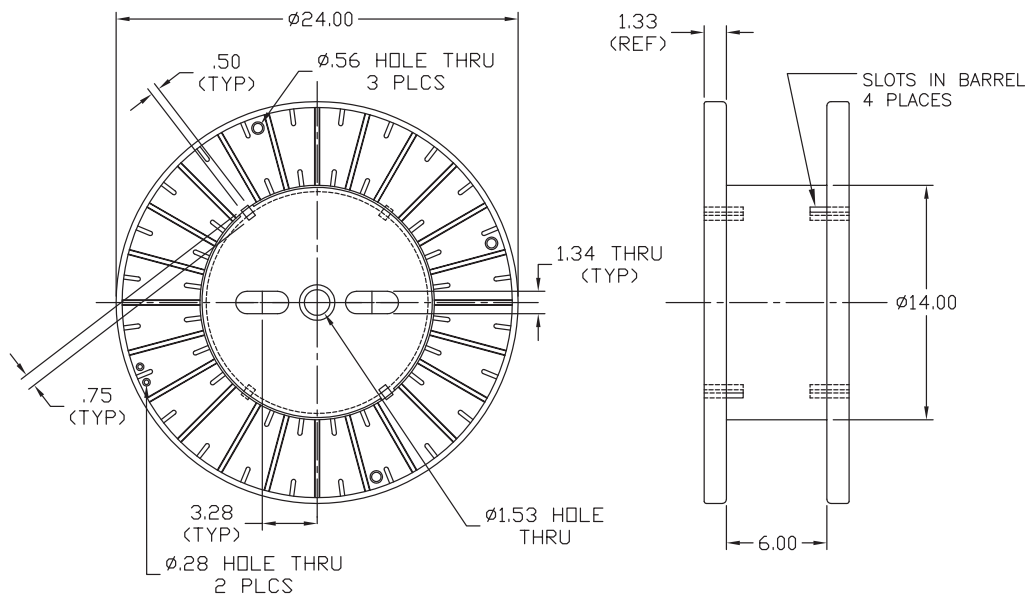
MAGNET WIRE 15 x 16 x 24

REEL WEIGHT (LBS.)	APPROX. CAPACITY (LBS.)	# PER PALLET
13.6	500	27/pallet



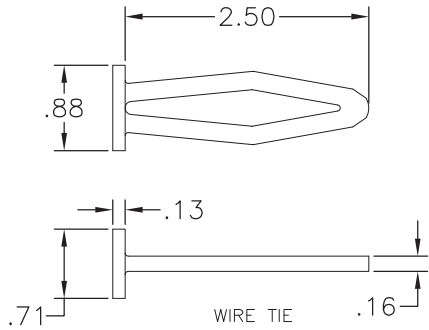
MAGNET WIRE 24 x 6 x 14

REEL WEIGHT (LBS.)	APPROX. CAPACITY (LBS.)	# PER PALLET
20	250	36/pallet



OTHER #320 WIRE TIE

WEIGHT (LBS.)	# PER BOX
0.008	2,500/box

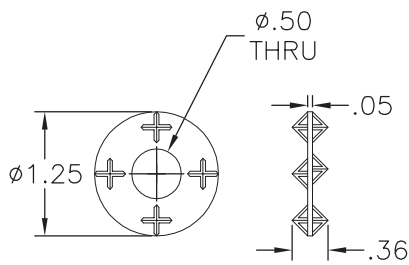


MATERIAL: LDPE MULTI-COLOR REGRIND.



OTHER #323 SHIPPING CLEAT

WEIGHT (LBS.)	# PER BOX
0.003	5,200/box

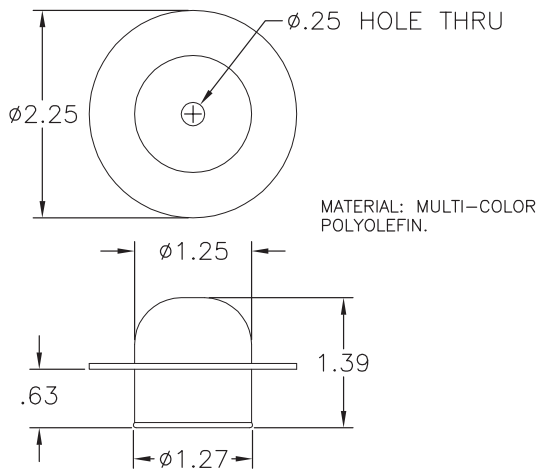


MATERIAL: MULTI-COLOR POLYOLEFIN.



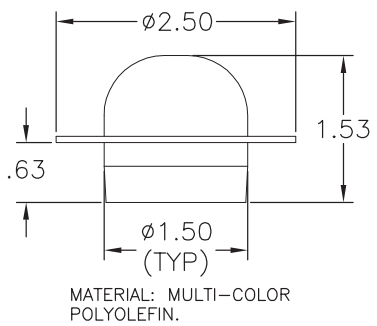
OTHER #310 PLASTIC REEL ADAPTER

WEIGHT (LBS.)	# PER BOX
0.02	1,250/box



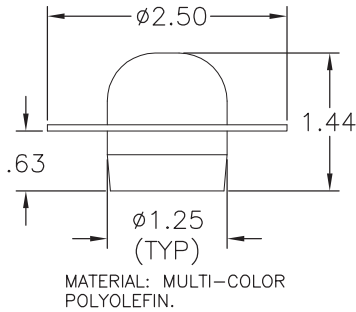
OTHER #311 PLASTIC REEL ADAPTER

WEIGHT (LBS.)	# PER BOX
0.025	900/box



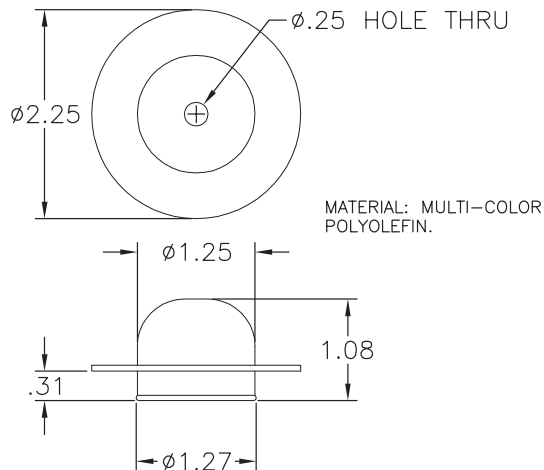
OTHER #312 PLASTIC REEL ADAPTER

WEIGHT (LBS.)	# PER BOX
0.022	1,200/box



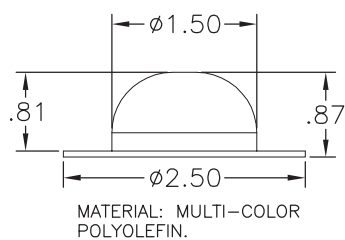
OTHER #314 PLASTIC REEL ADAPTER

WEIGHT (LBS.)	# PER BOX
0.017	1,800/box



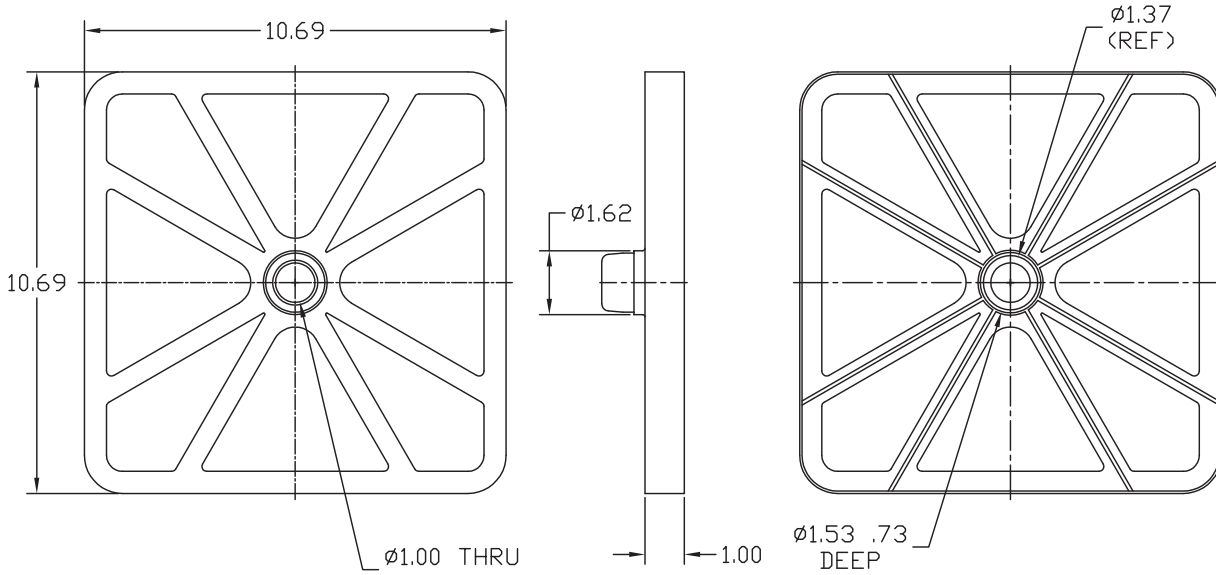
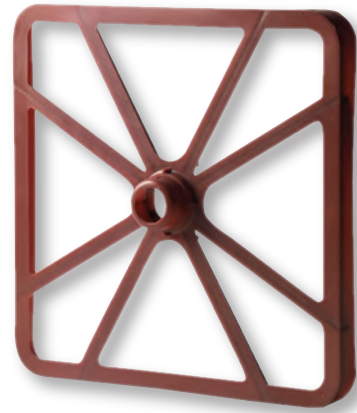
OTHER #316 PLASTIC REEL ADAPTER

WEIGHT (LBS.)	# PER BOX
0.018	1,750/box



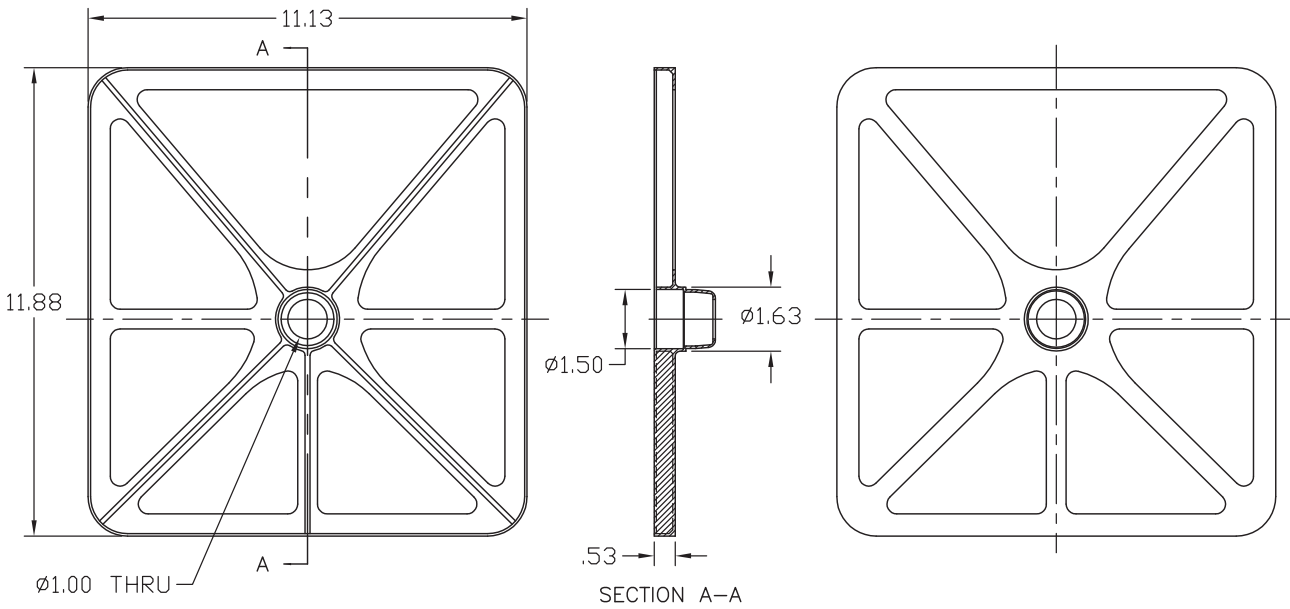
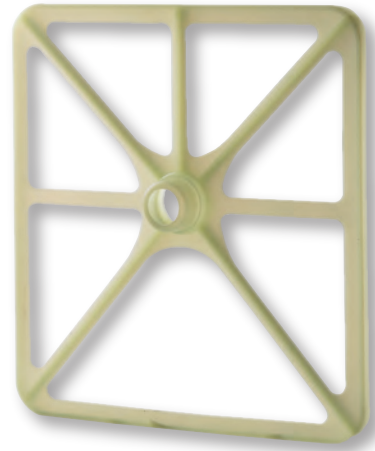
OTHER 10" CADDY

WEIGHT (LBS.)	# PER GAYLORD
0.22	400/gaylord



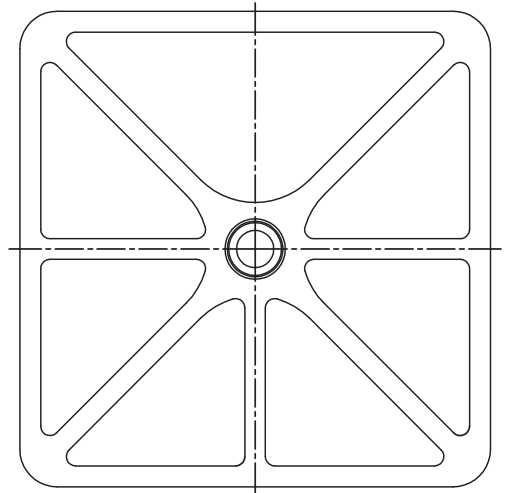
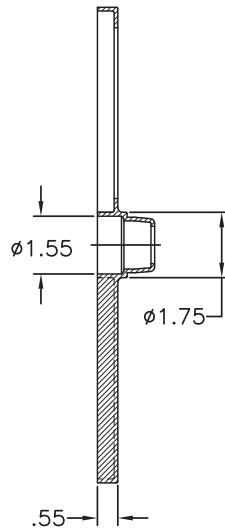
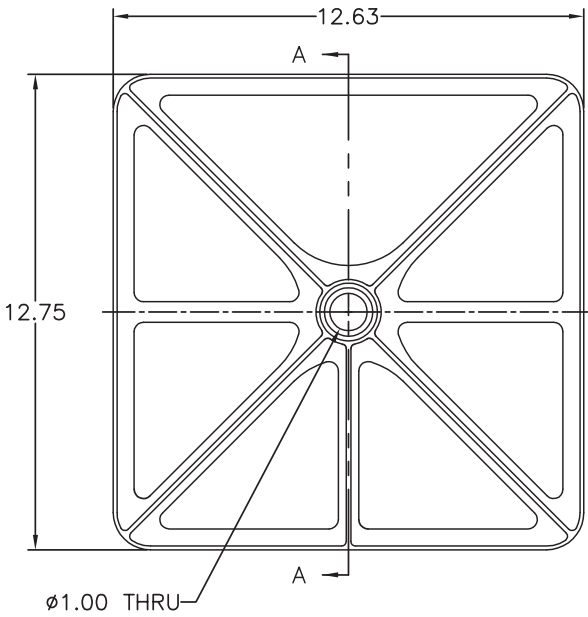
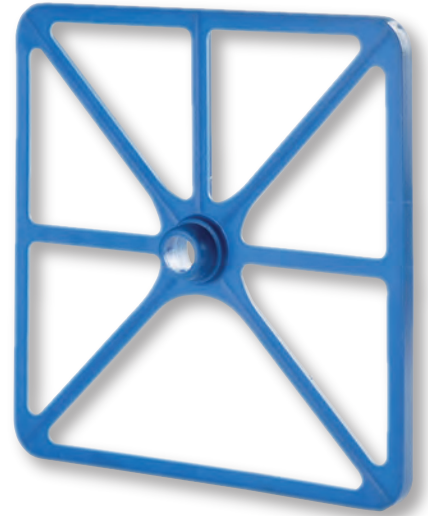
OTHER 11" CADDY

WEIGHT (LBS.)	# PER GAYLORD
0.22	400/gaylord



OTHER 12" CADDY

WEIGHT (LBS.)	# PER GAYLORD
0.34	400/gaylord



SECTION A-A